

A close-up photograph of an industrial machine, likely for testing or production of electronic components. The machine features a large, white, cylindrical component on the left. In the center, a black, multi-lane testing head is visible, with several green LEDs illuminated. Below the testing head, a series of black, curved, U-shaped components are arranged in a row. The background shows various mechanical parts and cables, indicating a complex industrial environment.

INTELLIGENT LIGHT
TECHNOLOGY



Development and Production

The company Pfeifer und Seibel

At Pfeifer und Seibel we write a success story on the lighting market for more than 50 years. We understand light as a crucial element of our lives – it has an influence on health and our biological clock. The products we make and the projects we conduct enable us to make light intelligently controllable and adjustable to every situation.

There, it is our highest claim to fabricate products with a high quality and service life. From the first draft via the product development through to the manufacturing process our products have to pass strict controls.

Using our many years of experience in lighting systems and electronics we create customised solutions for every task. Our know-how contains the complete value chain of modern electronics.





1. Consulting and conception

The process for the preparation and realisation of a new development- and production concept is organised into several components.

At first our interdisciplinary project team analyses the task with you and researches all relevant requirements. We define the goals that need to be reached and adjust the following process in full transparency.



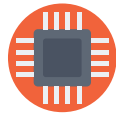


2. Realisation and development

We leave nothing to chance. Our standardised development process combines all steps; from the joint preparation of a requirement specification through to the manufacturing of a prototype or the final product. We prepare a development concept especially customised to your project. Within the planning, all interfaces available will be taken into account and displayed separately.

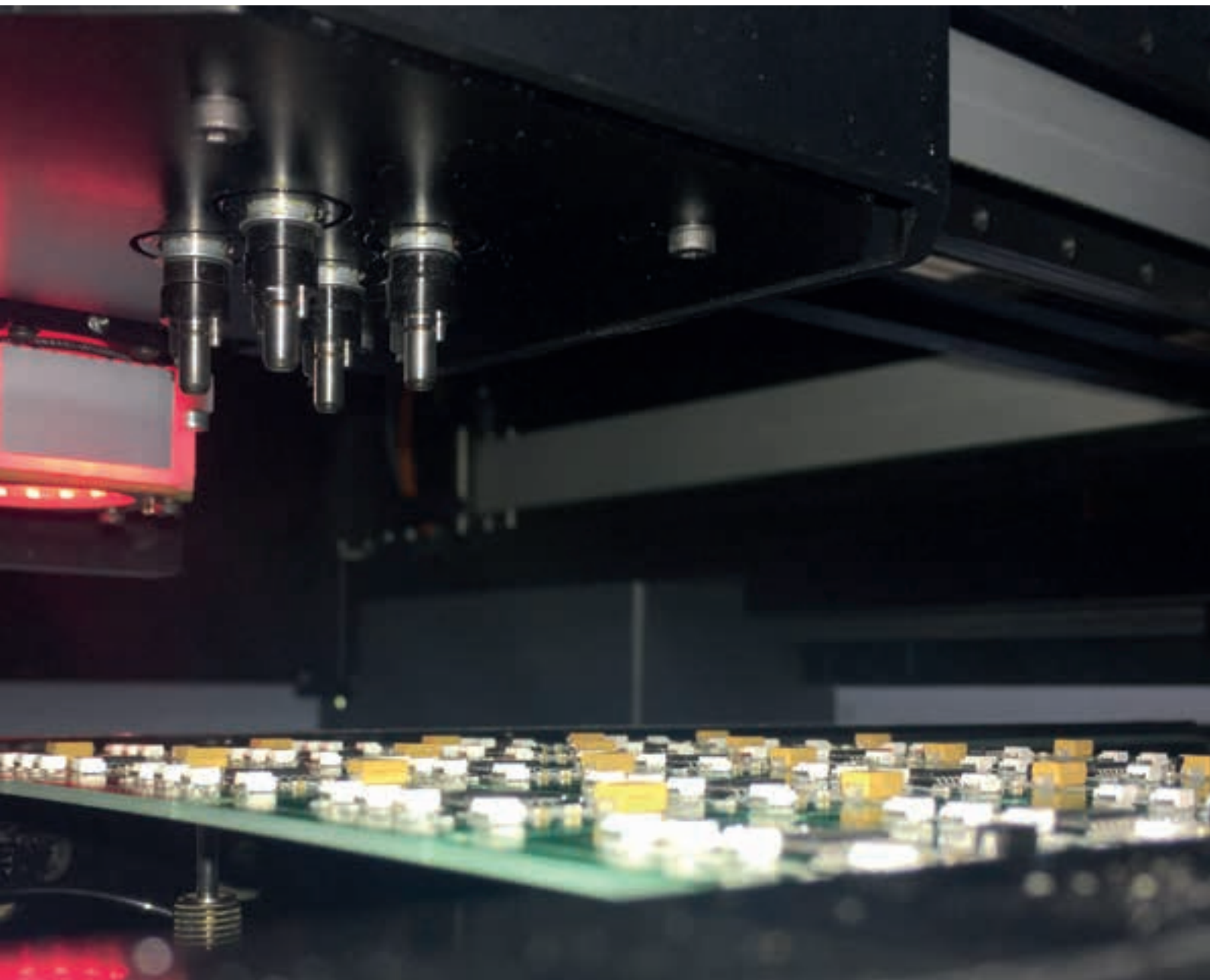
In preparation for an accurate realisation of components we work out all necessary technical data. Our needs-based material management guarantees you an optimal cost-benefit ratio.





3. Equipping of circuit boards

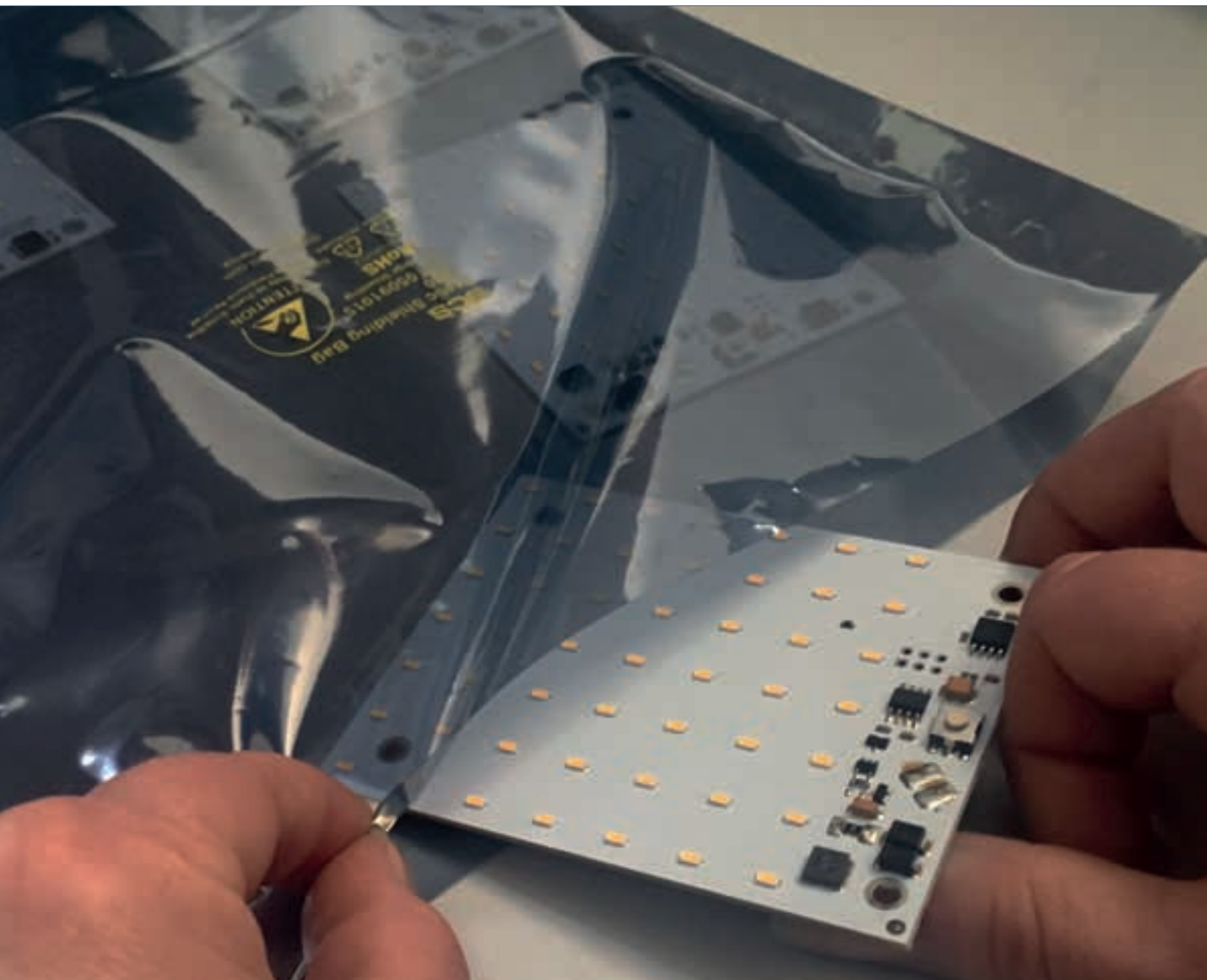
In our electronics manufacturing we have an emphasis on flexibility. Here, development activities are being brought to life. We equip boards and SMD electronics for customers from almost all sectors according to individual specifications. Our expertise in the manufacturing of LED-equipped circuit boards is one of our distinguishing features. We make high-qualitative products by means of a highly modern machinery, well-trained professionals and optimised production processes.





4. Control and supply

Here, you can see our personal claim for a perfect result. Every component has to pass strict tests and controls after being completed. Only after that it is allowed to leave our properties in envelopes suitable for ESD.





5. Service

After the completion of your project we do not leave you out in the rain and happily accompany you further. We convince our customers with reliability, competence and quality awareness – made in Germany – for more than 50 years. We are certified according to DIN EN ISO 9001 since 1996.

Shortly

Our services in the area of development

- > Development of LED modules, light controls and control technology
- > Software development for PIC, Zilog, Atmel and Infineon microcontrollers
- > EMC-compliant layout development of circuit boards
- > Development, mechanical construction and design of luminaires
- > Preparation of technical data
- > Lighting design
- > Thermal simulation
- > Handling of the international approval of luminaires
- > ENEC approval of manufactured assemblies

Our services in the area of electronics manufacturing

- > Manufacturing of up to 10,000 components per hour
- > Manufacturing of circuit boards, sized xyz 600mm x 400mm x 5mm
- > SMD placement on modern assembly lines
- > THT placement by trained professionals
- > Turnover reflow soldering
- > Wave soldering
- > Vapor phase soldering
- > Self-built test devices
- > Optical inspection
- > Electronic tests

Pfeifer und Seibel GmbH

Maurerstraße 15
35236 Breidenbach

Phone: +49 6465 92 71 0
Fax: +49 6465 92 71 500

Email: info@ps-leuchten.de
Web: www.ps-leuchten.de

